



**STRONG PARTNERS.
TOUGH TRUCKS.™**

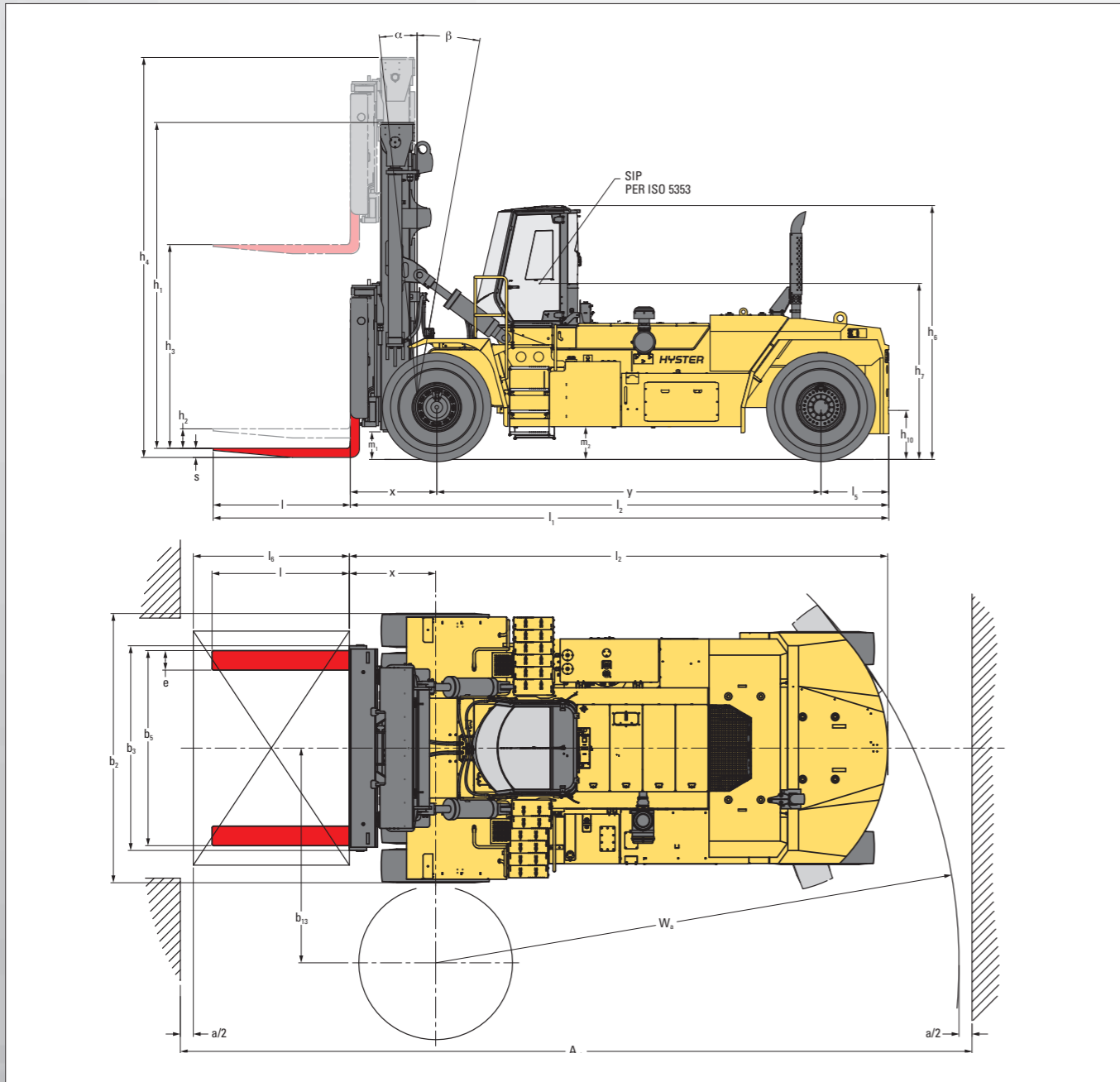


H36-48XD(S)-12 SERIES TECHNICAL GUIDE



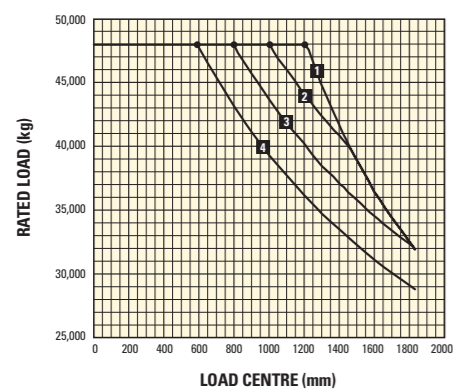
WWW.HYSTER.COM

> DIMENSIONS



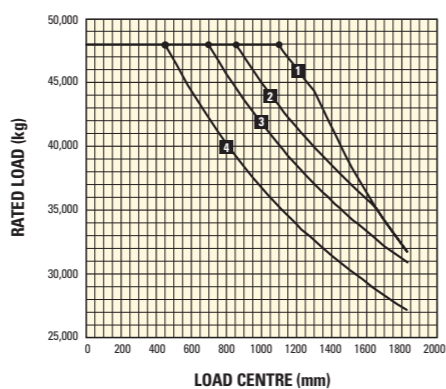
> CAPACITY RATINGS

STANDARD CARRIAGE WITH FORK POSITIONING



- 1 H48XDS12 / H48XD12
- 2 H44XDS12 / H44XD12
- 3 H40XDS12 / H40XD12
- 4 H36XDS12

PIN TYPE SIDE SHIFT FRAME CARRIAGE WITH FORK POSITIONING



- 1 H48XDS12 / H48XD12
- 2 H44XDS12 / H44XD12
- 3 H40XDS12 / H40XD12
- 4 H36XDS12

Ratings are for the basic truck equipped with mast 7010 mm lift height (BOF), standard carriage and forks. Only applicable for 18.00 - 25 tyres.

MAST AND CAPACITY INFORMATION <

H36XDS12 RATED CAPACITY KG@ 1200 MM LOAD CENTRE

	Lift height h ₃ + s (mm)	Lowered height h ₁ (mm)	Free lift height h ₂ + s (m)	Extended height h ₄ (mm)	Pin Type carriage with independent Fork Positioner		Pin Type Side Shift frame carriage with independent Fork Positioner	
					Mast tilt (°)	Capacity (kg)	Mast tilt (°)	Capacity (kg)
2 STAGE NFL	4,407	5,183	0	7,316	6 / 10	36,280	6 / 10	34,340
	7,150	6,554	0	10,059	6 / 10	36,100	6 / 10	33,890
	8,647	7,316	0	11,583	6 / 10	35,120	6 / 10	32,970
	9,284	7,621	0	12,193	6 / 10	34,720	6 / 10	32,590
	9,894	7,926	0	12,803	6 / 10	34,310	6 / 10	32,180
	12,790	9,454	0	15,779	15 / 15	TBA	15 / 15	TBA

H40XDS12 RATED CAPACITY KG@ 1200 MM LOAD CENTRE

	Lift height h ₃ + s (mm)	Lowered height h ₁ (mm)	Free lift height h ₂ + s (m)	Extended height h ₄ (mm)	Pin Type carriage with independent Fork Positioner		Pin Type Side Shift frame carriage with independent Fork Positioner	
					Mast tilt (°)	Capacity (kg)	Mast tilt (°)	Capacity (kg)
2 STAGE NFL	4,407	5,183	0	7,316	6 / 10	40,820	6 / 10	39,000
	7,150	6,554	0	10,059	6 / 10	40,820	6 / 10	38,550
	8,647	7,316	0	11,583	6 / 10	40,620	6 / 10	38,280
	9,284	7,621	0	12,193	6 / 10	40,200	6 / 10	37,870
	9,894	7,926	0	12,803	6 / 10	39,750	6 / 10	37,460
	12,790	9,454	0	15,779	15 / 15	TBA	15 / 15	TBA

H44XDS12 RATED CAPACITY KG@ 1200 MM LOAD CENTRE

	Lift height h ₃ + s (mm)	Lowered height h ₁ (mm)	Free lift height h ₂ + s (m)	Extended height h ₄ (mm)	Pin Type carriage with independent Fork Positioner		Pin Type Side Shift frame carriage with independent Fork Positioner	
					Mast tilt (°)	Capacity (kg)	Mast tilt (°)	Capacity (kg)
2 STAGE NFL	4,407	5,183	0	7,316	6 / 10	44,000	6 / 10	41,980
	7,150	6,554	0	10,059	6 / 10	44,000	6 / 10	41,530
	8,647	7,316	0	11,583	6 / 10	43,700	6 / 10	41,260
	9,284	7,621	0	12,193	6 / 10	43,600	6 / 10	41,160
	9,894	7,926	0	12,803	6 / 10	43,150	6 / 10	40,730
	12,790	9,454	0	15,779	15 / 15	TBA	15 / 15	TBA

H48XDS12 RATED CAPACITY KG@ 1200 MM LOAD CENTRE

	Lift height h ₃ + s (mm)	Lowered height h ₁ (mm)	Free lift height h ₂ + s (m)	Extended height h ₄ (mm)	Pin Type carriage with independent Fork Positioner		Pin Type Side Shift frame carriage with independent Fork Positioner	
					Mast tilt (°)	Capacity (kg)	Mast tilt (°)	Capacity (kg)
2 STAGE NFL	4,407	5,183	0	7,316	6 / 10	48,070	6 / 10	46,560
	7,150	6,554	0	10,059	6 / 10	48,070	6 / 10	46,110
	8,647	7,316	0	11,583	6 / 10	48,070	6 / 10	45,840
	9,284	7,621	0	12,193	6 / 10	48,070	6 / 10	45,740
	9,894	7,926	0	12,803	6 / 10	47,710	6 / 10	45,310
	12,790	9,454	0	15,779	15 / 15	TBA	15 / 15	TBA

H40XD12 RATED CAPACITY KG@ 1200 MM LOAD CENTRE

	Lift height h ₃ + s (mm)	Lowered height h ₁ (mm)	Free lift height h ₂ + s (m)	Extended height h ₄ (mm)	Pin Type carriage with independent Fork Positioner		Pin Type Side Shift frame carriage with independent Fork Positioner	
					Mast tilt (°)	Capacity (kg)	Mast tilt (°)	Capacity (kg)
2 STAGE NFL	4,407	5,183	0	7,316	6 / 10	40,000	6 / 10	38,350
	7,150	6,554	0	10,059	6 / 10	40,000	6 / 10	37,900
	8,647	7,316	0	11,583	6 / 10	40,000	6 / 10	37,600
	9,284	7,621	0	12,193	6 / 10	39,600	6 / 10	37,200
	9,894	7,926	0	12,803	6 / 10	39,250	6 / 10	36,750
	12,790	9,454	0	15,779	15 / 15	TBA	15 / 15	TBA

H44XD12 RATED CAPACITY KG@ 1200 MM LOAD CENTRE

	Lift height h ₃ + s (mm)	Lowered height h ₁ (mm)	Free lift height h ₂ + s (m)	Extended height h ₄ (mm)	Pin Type carriage with independent Fork Positioner		Pin Type Side Shift frame carriage with independent Fork Positioner	
					Mast tilt (°)	Capacity (kg)	Mast tilt (°)	Capacity (kg)
2 STAGE NFL	4,407	5,183	0	7,316	6 / 10	44,000	6 / 10	42,500
	7,150	6,554	0	10,059	6 / 10	44,000	6 / 10	42,000
	8,647	7,316	0	11,583	6 / 10	44,000	6 / 10	41,750
	9,284	7,621	0	12,193	6 / 10	44,000	6 / 10	41,650
	9,894	7,926	0	12,803	6 / 10	43,600	6 / 10	41,200
	12,790	9,454	0	15,779	15 / 15	TBA	15 / 15	TBA

H48XD12 RATED CAPACITY KG@ 1200 MM LOAD CENTRE

	Lift height h ₃ + s (mm)	Lowered height h ₁ (mm)	Free lift height h ₂ + s (m)	Extended height h ₄ (mm)	Pin Type carriage with independent Fork Positioner		Pin Type Side Shift frame carriage with independent Fork Positioner	
					Mast tilt (°)	Capacity (kg)	Mast tilt (°)	Capacity (kg)
2 STAGE NFL	4,407	5,183	0	7,316	6 / 10	48,000	6 / 10	46,200
	7,150	6,554	0	10,059	6 / 10	48,000	6 / 10	45,750
	8,647	7,316	0	11,583	6 / 10	48,000	6 / 10	45,450
	9,284	7,621	0	12,193	6 / 10	48,000	6 / 10	45,350
	9,894	7,926	0	12,803	6 / 10	47,650	6 / 10	44,900
	12,790	9,454	0	15,779	15 / 15	TBA	15 / 15	TBA

POWERTRAINS

GENERAL	1-1	Manufacturer			HYSTER
	1-2	Model designation			H36-48XM(S)-12
	1-3	Drive			Diesel
ENGINE - STAGE IIIA 224kW	7-1	Engine manufacturer / model		Cummins	QSM 11L
	7-1a	Emission legislation		Stage IIIA	
	7-2	Engine power according to ISO 1585 nominal	kW/min-1	224	2,100
	7-2-1	Engine power according to ISO 1585 maximum	kW/min-1	224	1,800
	7-3	Rated speed	1/min-1	2,100	
	7-3-1	Engine torque @rpm	Nm/min-1	1,424	1,400
	7-4	Number of cylinders / displacement	# / cm ³	6	10,800
	7-5	Fuel consumption in accordance to VDI cycle	l/h	On request	
	7-8	Alternator output, idle / rated	A	65	120
	7-9	Electrical system voltage	V	24	
	7-10	Battery voltage / nominal capacity	V / Ah	(2x) 12	(2x) 105
ENGINE - STAGE IIIA 250kW	7-1	Engine manufacturer / model		Cummins	QSM 11L
	7-1a	Emission legislation		Stage IIIA	
	7-2	Engine power according to ISO 1585 nominal	kW/min-1	250	2,100
	7-2-1	Engine power according to ISO 1585 maximum	kW/min-1	272	1,800
	7-3	Rated speed	1/min-1	2,100	
	7-3-1	Engine torque @rpm	Nm/min-1	1,674	1,400
	7-4	Number of cylinders / displacement	# / cm ³	6	10,800
	7-5	Fuel consumption in accordance to VDI cycle	l/h	On request	
	7-8	Alternator output, idle / rated	A	65	120
	7-9	Electrical system voltage	V	24	
	7-10	Battery voltage / nominal capacity	V / Ah	(2x) 12	(2x) 105
DRIVE	8-1	Type of drive unit			Torque Converter
	8-2	Transmission Manufacturer / Type			Spicer Off-Highway TE-30
	8-6	Drive axle Manufacturer / Type			Kessler D102PL341/528-NLB
	8-10	Transfer of power			Hydraulically
	8-11	Service brake			Oil-immersed / wet disc
	8-12	Parking brake			Dry disc on drive axle
ADDITIONAL DATA	10-1	Operating pressure for attachments	bar	225	
	10-2	Oil flow for attachments	l/min	110	
	10-3	Hydraulic tank capacity	l	625	
	10-4	Fuel tank capacity	l	855	
	10-5	Steering design		Hydraulic power steering	
	10-6	Number of steering rotation		7.3	
	10-8	Towing coupling, model / type		Pin	
	10-9	Localised work illumination		108	

FEATURES AND OPTIONS

PERFORMANCE	STD	OPT
Cummins QSM 11L diesel engine rated 300 hp Tier 3 / 224 kW Stage IIIA	X	
Cummins QSM 11L diesel engine rated 335 hp Tier 3 / 250 kW Stage IIIA		X
Tier 3 / Stage IIIA compliant	X	
Wastegate turbocharger	X	
Hydraulically driven on-demand cooling fan	X	
120 amp alternator	X	
Powertrain protection system	X	
Heavy duty air intake	X	
Heavy duty air intake (raised)		X
Spicer Off-Highway TE-30 5-speed auto-shifting transmission	X	
Kessler D102 drive axle with wet disc brakes	X	
DRIVE	STD	OPT
Traction speed limiter - unconditional (adjustable)	X	
Traction speed limiter - loaded (adjustable)		X
18.00 - 25 40 Pneumatic Bias Tyres	X	
18.00 - 25 40PR Pneumatic Bridgestone STMS Slick Bias Tyres		X
18.00 x 25 Pneumatic Goodyear Bias Tyres	X	
18.00 x 25-40 Pneumatic, E4 Bias Tyres		X
18.00 x 25 Pneumatic Goodyear Slick Radial Tyres		X
18.00 x 25 Continental Container Master E4 Tyres	X	
Spare wheels and tyres		X
LIFT	STD	OPT
2 stage Non Free Lift mast	X	
Mast tilt - 6° Forward / 10° Back	X	
Mast tilt - 15° Forward / 15° Back		X
Hydraulic Accumulator	X	
Hydraulic system temperature protection with performance de-rate		X
Automatic throttle up when lifting (in neutral or inching) (1)	X	

HANDLING	STD	OPT
Short Wheelbase (5385mm / 212")		X
Attachments for steel load handling		X
Mast Tilt Indicator - Mechanical		X
3150mm (124") QD Pin type carriage with individual fork positioning	X	
3150mm (124") QD Pin type integral sideshift carriage with individual fork positioning		X
3150mm (124") QD Hook type double function sideshift carriage with individual fork positioning		X
2440mm (96") length Pin type quick disconnect forks	X	
Pin type quick disconnect forks (various sizes)		X
Hook type quick disconnect forks (various sizes)		X
ERGONOMICS	STD	OPT
Enclosed operator cabin	X	
Powered tilt operator compartment for service	X	
Isolated cabin mounting for low noise and vibration	X	
Operator presence system	X	
Mechanical suspension seat	X	
Air suspension seat		X
Deluxe air suspension seat		X
Low backrest seat	X	
High backrest seat		X
Armrest on left side	X	
Cloth seat cover		X
Vinyl seat cover	X	
Seat heating		X
Seat ventilation		X
2-point high visibility seatbelt	X	
Lateral seat sliding mechanism		X
Floor mat	X	
Coat hook	X	

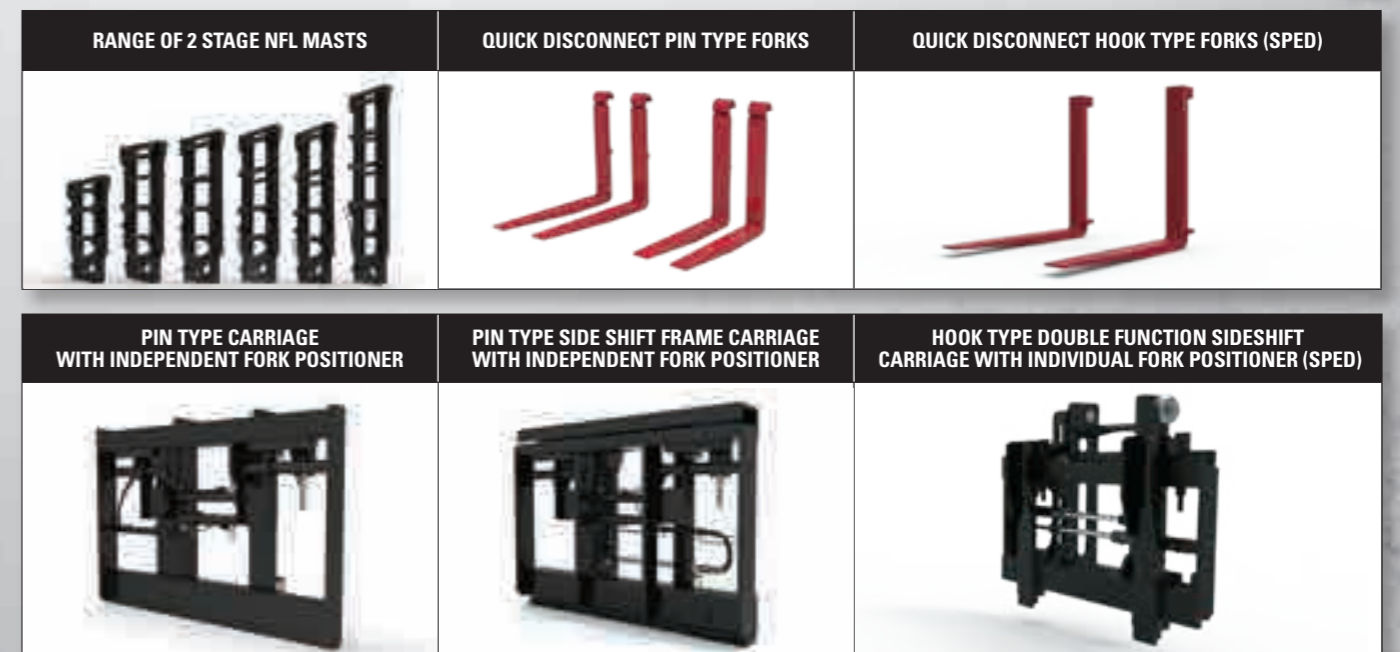
FEATURES AND OPTIONS

ERGONOMICS (continued)	STD	OPT
Interior dome light	X	
Front, top and rear wipers	X	
"H"-pattern front wiper		X
"I"-pattern front wiper	X	
Front and rear window defrosters	X	
Right side door	X	
Wire mesh installed on top of operator compartment		X
7" Integrated Performance Display	X	
Touchpoint™ mini levers hydraulic control integrated in control arm	X	
Joystick hydraulic control integrated in control arm		X
Steering wheel with spinner knob	X	
Directional control lever on steering column		X
Standard directional on control switch	X	
Directional control on joystick		X
Park brake - push button applied	X	
Park brake - automatically applied		X
Interior wide angle mirrors	X	
Heater with adjustable speed fan	X	
Telescoping & tilting steering column	X	
USB outlet inside armrest	X	
24-12 volt DC converter with 1 socket and 2 USB outlets		X
24-12 volt DC converter with 2 sockets and 2 USB outlets		X
Enclosed Operator Cabin with Automatic Climate Control		X
Reading light		X
Sun shades on top and rear		X
Sun visors front window		X
Cloth trainer seat with 2-point seatbelt	X	
Recirculation fan	X	
Accessory mounting bracket on cab front right pillar	X	
Document holder on cab front right pillar	X	
Heated top- and/or rear window	X	
Radio preparation with 2 speakers and antenna	X	
VISIBILITY	STD	OPT
Top window with armoured glass	X	
Steel bars under armoured glass top window - enclosed operator cabin		X
Exterior mirrors mounted to handrails	X	
Rear view camera system		X
Radar object detection system		X
Halogen work lights	X	
High performance LED work lights		X
Two halogen head lights mounted on front fenders	X	
Two LED head lights mounted on front fenders		X
Four halogen head lights mounted on front fenders		X
Four LED head lights mounted on front fenders		X
Four cabin mounted work lights	X	
Two rearward work lights mounted on the cabin	X	
LED stop/tail/brake lights	X	

OPERATION	STD	OPT
Turn signals, hazard & marker lights (LED)	X	
Electric air horn 112 dBA	X	
Visible alarm - Amber strobe light, key switch activated	X	
Audible alarm - Reverse direction activated 82-102 dB(A), self-adjusting	X	
Audible alarm - Reverse direction white noise		X
Forward motion alarm		X
Pedestrian awareness light (continuous)		X
Pedestrian awareness light (directional)		X
Seatbelt interlock for engine start		X
Seatbelt indicator light on top of cab		X
Hydraulic load weighing system		X
Tyre pressure monitoring system		X
Lockable battery disconnect switch	X	
Battery jump start connector (NATO plug)		X
"Empty seat" engine shutdown		X
Key switch start with interlock		X
Electric circuit breakers		X
Non-lockable fuel cap	X	
Lockable fuel cap		X
Diesel fuel inlet strainer in filler neck		X
Hyster Tracker wireless asset management system		X
Auto greasing system for base truck		X
Centralised greasing provision for upper chain sheaves		X
24 volt electrical system		X
Steer wheel lug nut protection		X
APPEARANCE	STD	OPT
Hyster yellow paint base truck	X	
Special paint base truck		X
Operator compartment special paint (outside only)		X
Operator compartment special paint (complete cabin)		X
Hazard warning striping on counterweight		X
SUPPLEMENTAL	STD	OPT
Literature package		X
Operator's manual		X
CE certification		X
Warranty: 24 Months / 4,000 Hours Parts & Manufacturer's Warranty		X
Warranty: 12 Months / 2,000 Hours Parts & Manufacturer's Warranty		X

Other options available through Special Products Engineering Department (SPED). Contact Hyster for details.

FRONT END EQUIPMENT



STRONG PARTNERS. TOUGH TRUCKS.™

FOR DEMANDING OPERATIONS, EVERYWHERE.

Hyster supplies a complete range of warehouse equipment, IC and electric counterbalanced trucks, container handlers and reach stackers. Hyster is committed to being much more than a lift truck supplier.

Our aim is to offer a complete partnership capable of responding to the full spectrum of material handling issues: Whether you need professional consultancy on your fleet management, fully qualified service support, or reliable parts supply, you can depend on Hyster.

Our network of highly trained dealers provides expert, responsive local support. They can offer cost-effective finance packages and introduce effectively managed maintenance programmes to ensure that you get the best possible value. Our business is dealing with your material handling needs so you can focus on the success of your business today and in the future.



HYSTER EUROPE

Centennial House, Frimley Business Park, Frimley, Surrey, GU16 7SG, England.

Tel: +44 (0) 1276 538500



Reg no. 10004925



www.hyster.com



infoeurope@hyster.com



[/HysterEurope](https://www.facebook.com/HysterEurope)



[@HysterEurope](https://twitter.com/HysterEurope)



[/HysterEurope](https://www.youtube.com/HysterEurope)



HYSTER-YALE UK LIMITED trading as Hyster Europe. Registered Address: Centennial House, Building 4.5, Frimley Business Park, Frimley, Surrey GU16 7SG, United Kingdom. Registered in England and Wales. Company Registration Number: 02636775.

©2021 HYSTER-YALE UK LIMITED, all rights reserved. HYSTER,  and STRONG PARTNERS. TOUGH TRUCKS., are trademarks of HYSTER-YALE Group, Inc.

Kessler is a trademark of Kessler & Co. GmbH & Co. KG. Spicer Off-Highway is a trademark of Dana Inc. Continental is a trademark of Continental AG.

Goodyear is a trademark of The Goodyear Tire & Rubber Company. Bridgestone is a trademark of Bridgestone Corporation.

Hyster products are subject to change without notice. Forklift trucks illustrated may feature optional equipment.